

# PocketMac<sup>®</sup> ppcTunes<sup>™</sup> 1.0 Installation & Setup For Windows

PocketMac ppcTunes Website: <http://www.PocketMac.net>

E-mail: [PocketMac@PocketMac.net](mailto:PocketMac@PocketMac.net)

Technical support: <http://www.PocketMac.net/support.htm>

Copyright 2001-2004 Information Appliance Associates

PocketMac<sup>®</sup> ppcTunes<sup>™</sup> 1.0 Installation & Setup For Windows ..... 1

1 Getting Started... ..... 3

2 Launching PocketMac ppcTunes for the First Time..... 5

3 Support & Troubleshooting ..... 8

4 Thank you ..... 8

# 1 Getting Started...

What is ppcTunes? PocketMac ppcTunes provides a bridge between iTunes for Windows and Pocket PC mobile devices. It can export or copy the music files from any iTunes user-defined playlist (including smart playlists) to a Pocket PC or its storage card(s).

This manual, then, is designed to offer a complete tour of PocketMac ppcTunes™. So, let's get started...

## 1.1 Basic System Requirements

Please ensure that your system meets the following basic requirements before using PocketMac ppcTunes.

- Windows XP/2000
- iTunes 4.x
- Pocket PC/Pocket PC 2000/Pocket PC 2002/Pocket PC 2003/Pocket PC 2003 SE device

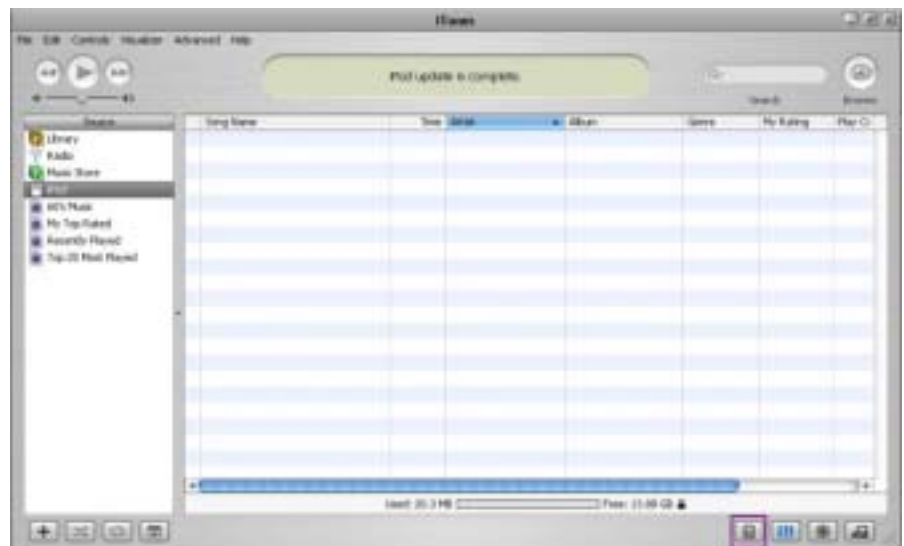
If it does, we're all set to go!

**Please note:** PocketMac ppcTunes is designed to copy unprotected music files to the Pocket PC only. It will not unprotect, break, hack, reverse-engineer, or otherwise convert protected music files into unprotected music files.

## 1.2 IMPORTANT STEP: PLEASE READ THIS FULLY BEFORE INSTALLING SOFTWARE!

It is important before you install PocketMac ppcTunes for Windows on your PC that you connect install iTunes on your Windows machine.

If you haven't already done so, please go to <http://www.apple.com/iTunes> and download/install iTunes before proceeding to the next step.



## 1.3 Install/Uninstall

**Please note:** You can install PocketMac ppcTunes on up to 2 machines of your choosing.

To install PocketMac ppcTunes on your PC, run the .exe file you downloaded. The setup of PocketMac ppcTunes will be started.

Click the "Next>" button to begin installing PocketMac ppcTunes.

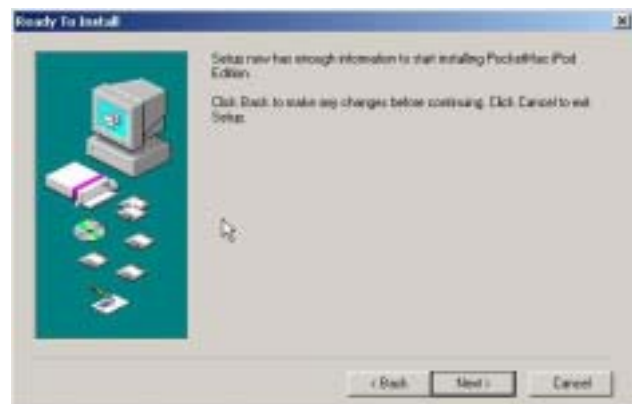


You will be asked to choose which folder you'd like PocketMac ppcTunes installed to on your PC. If you would like another folder besides "C:\Program Files\ppcTunes", click the "Browse" button and you'll be able to select a new folder to install the software to.

When you are done, click the "Next>" button.



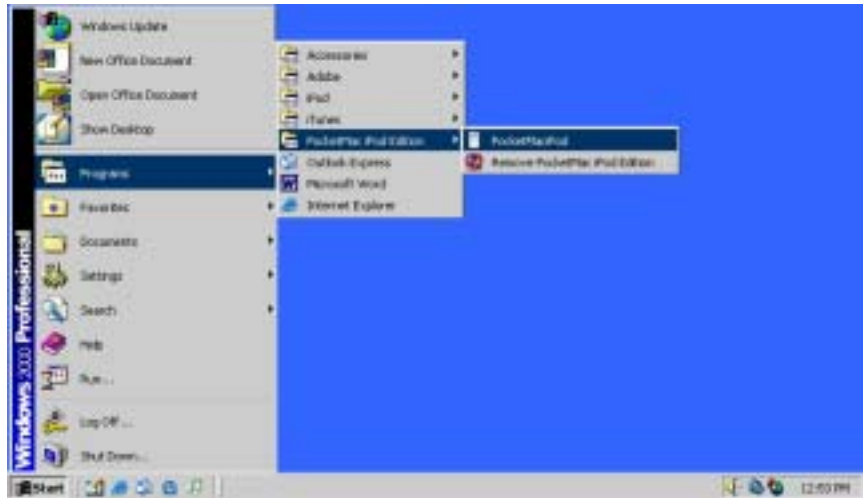
The next screen is an intermediate step. To install PocketMac ppcTunes, just click the "Next>" button.



The installation program will complete copying files and installing the proper settings. Once it is done, you can click the "Close" button. You're all set!

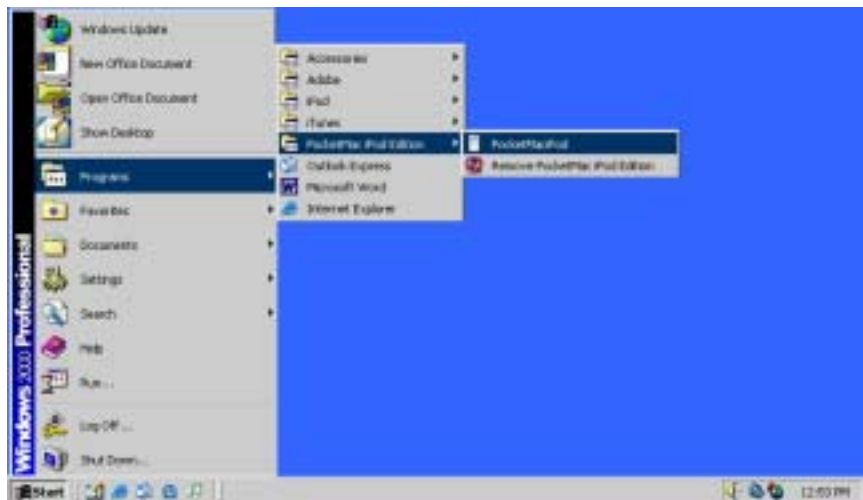


If you should later decide to *uninstall* PocketMac ppcTunes, open the "PocketMac ppcTunes" Group in the "Programs" section of the Start Menu. Then click on "Remove PocketMac ppcTunes". That's all you need to do to uninstall the software.



## 2 Launching PocketMac ppcTunes for the First Time

To launch PocketMac ppcTunes, click on the "Start Menu", open the "PocketMac ppcTunes" Group in the "Programs" section of the Start Menu. Then click on "ppcTunes" icon. That's all you need to do to start the software if you haven't restarted your machine.

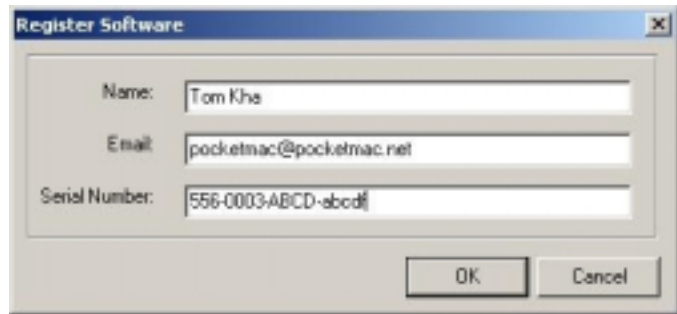


### 2.2 Entering the Registration Information

When PocketMac ppcTunes is launched for the first time, it will ask for the registration information by displaying the "Register Software" screen, as shown here.

You can register the software by entering your name, email address, and the serial number from the confirmation email you received as part of the purchase process.

**Please note:** You must have an active Internet connection to register this software.



[Click here to have your confirmation email with serial number resent.](#) (Please note that serial numbers are case-sensitive. This means that "xyz" is not the same as "XYZ" nor "xYz", etc.) **We highly recommend copying (Control+"C") and pasting (Control+"V") the serial number to ensure no errors in transcribing it.**

The Register Software window will connect to the Internet and "activate" the software for this PC. Each serial number can be activated on a maximum of three computers, either PCs or Macs.

PocketMac ppcTunes will automatically quit if the Register Software window is unable to activate the software.

When you're done entering your registration information, click the "OK" button to activate the software.

## ***2.3 Running & Configuring PocketMac ppcTunes***

When PocketMac ppcTunes is launched for the first time, you will see the following window. If you would like to sync with the default options you can click the sync button in the middle of the screen. To further configure exactly what data you would like synced, click on the preferences (gears) button on the right hand side of the window.

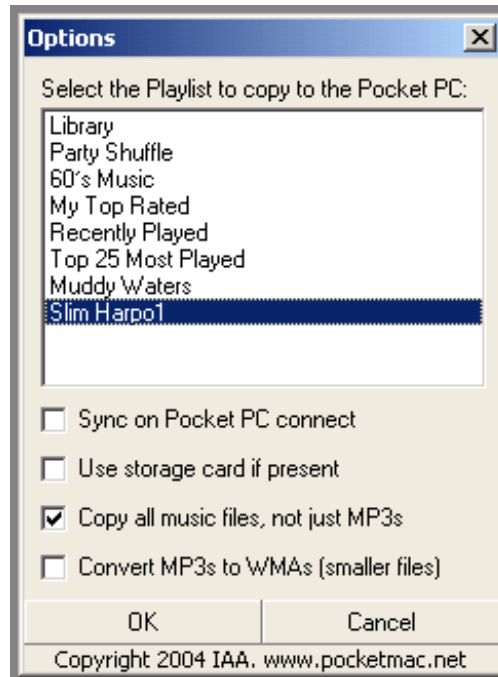


As you can see the preferences are broken down into 4 separate pieces of information.

They are...

- 1) Choosing the playlist to copy to the Pocket PC
- 2) Sync on Pocket PC Connect
- 3) Use storage card if present
- 4) Copy all files

You can turn on/off as many of the last 3 as you like; None of them is required to be on/off in combination with any other.



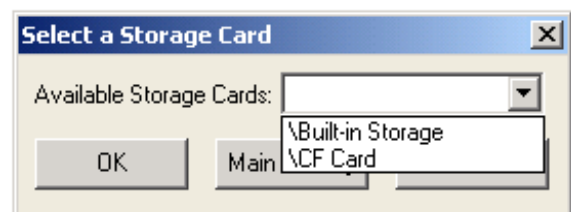
Choosing which playlist to sync is probably the simplest, but also most important option. iTunes allows you to organize your music collection into customized groupings called playlists. If you haven't yet organized the music in iTunes, this is a perfect time to create a playlist of music you might like to have with you on your Pocket PC. Then, come back to ppcTunes, and select that playlist from within the options screen.

Sync on Pocket PC connect Enabling the "Sync on Pocket PC connect" option will mean that every time you connect your Pocket PC to your PC, ppcTunes will start up and copy the playlist you've selected to your mobile device. To enable this option, click the checkbox next to "Sync on Pocket PC connect".

Use storage card if present Enabling the "Use storage card if present" option will direct ppcTunes to use your Pocket PC's external storage card (Compact Flash, SD, MMC cards) when copying music to your Pocket PC. This is a great option if you have a large storage card and don't want to take up your Pocket PC's storage. To enable this option, click the checkbox next to "Use storage card if present".

Please note: When ppcTunes copies your playlist to the Pocket PC the first time with this option enabled, it will prompt you to select a storage card as shown here.

Select the card you wish to use, and then click OK. If you've changed your mind and would rather use the Pocket PC's main memory, click the "Main Memory" button. Or, if you're unsure



what to do, just click "Cancel" and no music will be copied.

Copy all music files, not just MP3s

Enabling the "Copy all music" option means that files other than just MP3s will be copied to the Pocket PC. Generally speaking, the Pocket PC can play MP3s and WMAs (Windows Media files) and WAVs (Waveform Audio files); iTunes can play other formats such as AAC. If you have added special software to your Pocket PC so that it, too, can play AAC, then you may want to copy more than just the MP3s. To enable this option, click the checkbox next to "Copy all music files, not just MP3s".

**Please note:** PocketMac ppcTunes is designed to copy unprotected music files to the Pocket PC only. It will not unprotect, break, hack, reverse-engineer, or otherwise convert protected music files into unprotected music files.

When you're ready, click the "sync" button in the middle of the screen and PocketMac ppcTunes will do the rest!

## 3 Support & Troubleshooting

If you need support for PocketMac ppcTunes, please contact us through one of the following means:

- Through our website at <http://www.PocketMac.net/support.htm>. This form will get you in touch with our engineers who will be happy to help solve whatever might be wrong. Our turnaround time for most support requests is 24-48 hours.
- Through our support documents located at <http://www.PocketMac.net>

Most support issues can be easily resolved with an email or two, but we're happy to help even on more complex issues.

## 4 Thank you

Once again, thank you for your purchase. We thank you for being a part of a community that believes in supporting innovative software solutions.