



PocketMac Pro 3.0 Installation & Setup

PocketMac Pro Website: <http://www.PocketMac.net>

E-mail: PocketMac@PocketMac.net

Technical support: <http://www.PocketMac.net/support.htm>

Copyright 2001-2003 Information Appliance Associates

PocketMac Pro 3.0 Installation & Setup Guide 1

1 Before you start - configuring your Mac and Pocket PC 3

2 Launching PocketMac Pro for the First Time 7

3 Connecting your Pocket PC 10

4 Running PocketMac Pro 3.0..... 13

5 Browsing/Copying files..... 14

6 Synchronizing..... 15

8 Pocket PC Word, Excel & Note documents..... 22

9 iSync integration 22

10 Support & Troubleshooting..... 23

11 Thank you..... 23

12 Appendix A: Firewalls 23

1 Before you start - configuring your Mac and Pocket PC

If you're new to PocketMac Pro, welcome.

If you've used previous versions of PocketMac Pro, there are a few things that are different about this version you should know about.

In this version, there's no longer any need to configure ports or firewalls. Also, you do not have to manually install *anything* to your Pocket PC. Additionally, the look of PocketMac has changed quite a bit. All of the plug-ins have been completely rewritten, giving them dramatic speed improvements, as well as improved reliability.

This manual is designed to offer a tour of the new system, from the installation of PocketMac to the installation of new Pocket PC software. Let's get started...

1.1 Basic System Requirements

Please ensure that your system meets these basic requirements before using PocketMac Pro. This can help to save time-consuming support incidents and make the overall experience much smoother.

For your Pocket PC, please note that PocketMac Pro supports a wide variety of the most popular Pocket PC devices, with USB, Bluetooth, or Aiprot/other network connections. A current list can be found at the PocketMac Pro website at <http://www.pocketmac.net/pro3devices.htm>. Other models will be added as they are released and we can test them with the software.

1.2 Install/Uninstall

To install PocketMac Pro 3.0 on your Mac, double-click on the PM3-PRO icon. PocketMac Pro installation requires administrative privileges, so you are next prompted to enter your password or phrase.

This is the username/password you created when you set up your Mac for the very first time.



If you are attempting to install PocketMac Pro using an account on your Mac that does not have administrative privileges, installation will fail at this point. You must install PocketMac Pro using a user account on your Mac that has administrative privileges.

Once you have entered your password, the PocketMac Pro installation screen appears. This screen lets you select the location on your Mac in which the PocketMac Pro software is installed. The default location is the "Applications" folder on your main hard drive. We recommend that all users install PocketMac Pro to this location; only advanced users should select a different location.



At the top left of the PocketMac Pro installation screen, the "Install" option is selected by default. To start the installation, click on the "Install" button on the lower right side of the installation screen. When the installation is complete, you will be prompted to restart your Mac.

If you should later decide to *uninstall* PocketMac Pro, double-click on the PM3-PRO icon. You will be prompted for your Mac system password; enter it. When the PocketMac Pro installation screen appears, select "Uninstall" from the dropdown menu box in the upper left side of the PocketMac Pro installation screen. Next, click "Uninstall" from the lower right side of the PocketMac Pro installation screen. When install has concluded, select "Quit" from the lower right side of the screen.

1.3 Firewalls, File sharing and PocketMac Pro

Earlier versions of PocketMac Pro required manual configuration of firewalls on the Mac, but PocketMac Pro 3.0 takes care of all of this for you. During PocketMac Pro installation, the

PocketMac Pro installer detects the system firewall and configures it for use with PocketMac Pro.

If you are unable to synchronize your Mac with your Pocket PC device, or if you install or reconfigure one of these firewalls on your Macintosh subsequent to PocketMac Pro installation, it may be necessary to manually configure your firewall.

Should it be necessary to manually configure your firewall, they are included as an appendix to this document.

1.3.3 Products with file-sharing features

Many products today offer the ability to share files; that is, if we're running a copy of XYZ software on one Mac, we can access the XYZ software on another Mac through the XYZ software's filesharing features.

Products that may have file-sharing features that could interfere with PocketMac Pro include:

- FileMaker (Server)
- Dave

This is by no means an extensive list, however.

Please note that this is more intended as a general notice that such product may or may not interfere with PocketMac Pro. We believe it's quite possible that these applications can be configured to coexist with PocketMac Pro.

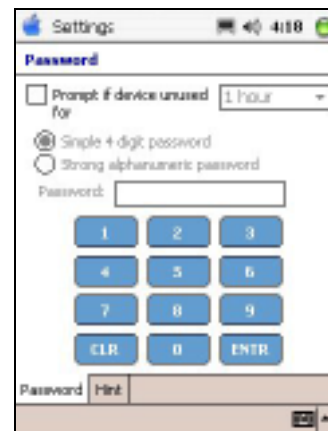
1.4 Pocket PC configuration

1.4.1 Pocket PC Password Protection

The main Pocket PC issue that can cause trouble for PocketMac Pro is that of password protection. PocketMac Pro does not currently support password-protected devices.

Password protection must be turned off for PocketMac Pro to successfully connect to your Pocket PC; that is, it is not enough to simply login to your device, you must actually turn off the password protection.

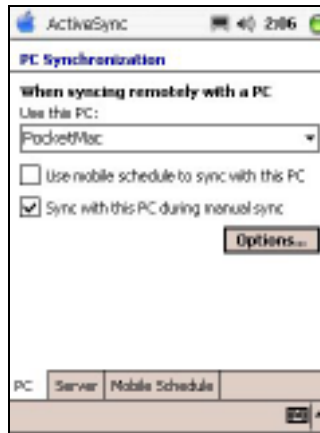
To do this, tap on your Pocket PC's "Start Menu", and choose "Settings". Then, tap on the "Password" control panel. Please ensure that its password settings are set to "No password" as shown here.



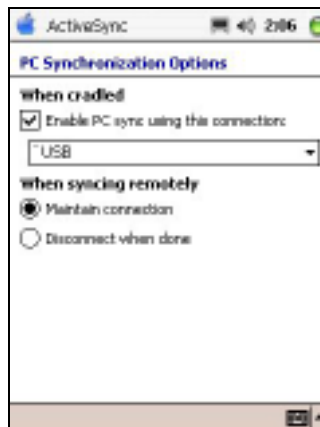
1.4.2 Pocket PC Active Sync settings

If you find that your Pocket PC is unable to maintain a connection over long periods of time, it may be related to the ActiveSync settings on the Pocket PC. If you are uncertain, you can check the settings on the Pocket PC by launching ActiveSync from the Start Menu. Then choose "Tools"->"Options" from the menu.

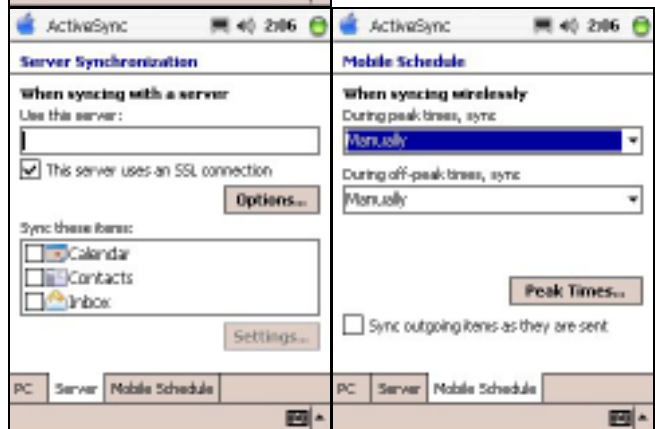
1. You should see a screen with three tabs ("PC", "Server", and "Mobile Schedule") along the bottom. On the first tab, the checkbox labeled "Use mobile schedule to sync with this PC" should be unchecked.



2. Additionally, the "Options" screen (displayed when you tap the "Options" button on the first tab) should show "Enable PC sync using this connection" and should be checked. "USB" should be displayed in the popup menu, and "Maintain connection" should be selected below.



3. On the "Server" tab, nothing should be checked or filled in. Likewise, both items on the "Mobile Schedule" tab should be set to "Manually".



2 Launching PocketMac Pro for the First Time

We recommend launching and configuring PocketMac Pro before connecting your device when starting it for the first time. This way, you can do all of the configuration work, and then connect your Pocket PC.

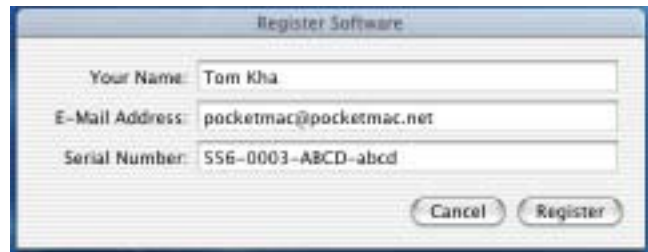
The PocketMac Pro installer adds a "PocketMac Pro" entry to your login items so that it will be started automatically when you start or log in to your Mac. The first time you start PocketMac Pro, you will be prompted for your registration information (see below). You can tell this status application is running because it places a PocketMac Pro status menu in the Mac toolbar on the upper left side of your Mac desktop, near the clock, volume, etc.

You can browse your Pocket PC and synchronize from this menu, as well as adjust your sync preferences. From this menu you can also start the PocketMac Pro application screen – just click on "Show PocketMac Pro" in the PocketMac Pro status menu. The PocketMac Pro screen that appears lets you synch and set preferences using icons and Mac menus. It also gives you a visual indication of your connection status between your Mac and your Pocket PC device. This connection status indicator is invaluable when you are setting up a new type of connection (see section 3, below).

2.1 Entering the Registration Information

When PocketMac Pro is launched for the first time, it will ask for the registration information by displaying the "Register Software" screen, as shown here.

You can register the software by entering your name, email address, and the serial number you received as part of the purchase process. (Please note that serial numbers are case-sensitive. This means that "xyz" is not the same as "XYZ" nor "xYz", etc.)



Register Software	
Your Name:	Tom Kha
E-Mail Address:	pocketmac@pocketmac.net
Serial Number:	SS6-0003-ABCD-abcd
<input type="button" value="Cancel"/> <input type="button" value="Register"/>	

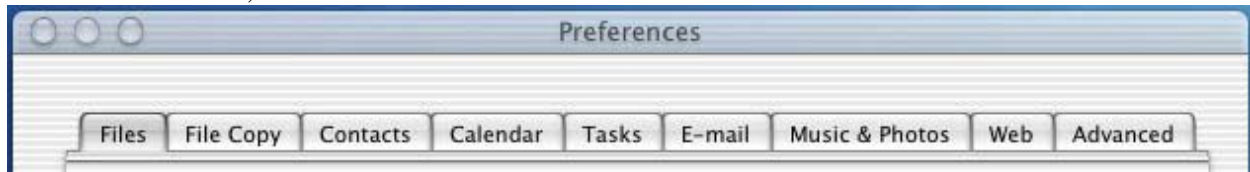
The Register Software window will connect to the internet and "activate" the software for this Macintosh. Each serial number can be activated on a maximum of two Macintoshes.

PocketMac Pro will automatically quit if the Register Software window is unable to activate the software. If you would like to launch it manually, you can do so from an alias in the "Applications" folder, inside the "PocketMac Bonus Software" folder.

When you're done entering your registration information, click the Register button to activate the software.

2.2 Configuring the Synchronization Preferences

Once we're done with the Registration section, we can move on to configuring the Synchronization preferences by clicking on the "Synchronization" tab at the top of the Preferences screen, as shown here.



In the Preferences, there are 9 distinct sections:

1. Files
2. File Copy
3. Contacts
4. Calendar
5. Tasks
6. Email
7. Music & Photos
8. Web
9. Advanced

While we'll explore each of the sync options in more detail later, we should take a moment now just to highlight the purpose of each of these sections.

2.2.1 Files

We would select this option and choose a Folder on the Mac if we wanted to sync files and folders between our Mac and our Pocket PC. We can also elect to use a storage card on the Pocket PC for synchronization if one is available.

2.2.2 File Copy

We would select this option if we wanted to copy a file or files from our Mac to our Pocket PC each time synchronization occurs. To add files to this list, click on the "+" button and select a files using the "Open" dialog box that appears. To delete files from this list, select the file(s) and click on the "-" button.

2.2.3 Contacts

We would select this option and choose a PocketMac Pro Plug-in if we wanted to sync contact data between our Mac and our Pocket PC.

2.2.4 Calendar

We would select this option and choose a PocketMac Pro Plug-in if we wanted to sync calendar data between our Mac and our Pocket PC. There is also an advanced option to limit the calendar data by age, to conserve storage space on the Pocket PC.

2.2.5 Tasks

We would select this option and choose a PocketMac Pro Plug-in if we wanted to sync task data between our Mac and our Pocket PC.

2.2.6 Email

We would select this option and choose a PocketMac Pro Plug-in if we wanted to sync email messages between our Mac and our Pocket PC. There is also an advanced option to limit the number of unread email messages, to conserve storage space on the Pocket PC.

2.2.7 Music & Photos

We would select this option if we wanted to sync music files and digital photos between our Mac and our Pocket PC. When these options are selected, all music files saved in iTunes in the "PocketMac Pro Mobile Tunes" playlist will be synchronized, and all photos saved in iPhoto in the "PocketMac Pro Mobile Album" will be synchronized. Please note, music and photo synchronization can be selected independently in this option, and we can also elect to use a storage card on the Pocket PC for synchronization if one is available.

2.2.8 Web

We would select this option if we wanted to synchronize favorites and locally saved websites between our Mac and our Pocket PC. When this option is selected, we must choose the Mac browser we want to use for synchronization as well as depth (in level of connecting pages) and level of detail (text and pictures or just text) of the saved sites being synchronized. We can also elect to use a storage card on the Pocket PC for synchronization if one is available.

The Web synchronization option also lets us synchronize Mazingo and AvantGo content between our Macintosh and our Pocket PC; this functionality is new in this version of PocketMac Pro.

2.2.9 Advanced

This option helps the plug-ins resolve "conflicts"; that is, if a particular contact, calendar, or task entry has changed on *both* the Pocket PC and the Mac, how should the plug-in determine which change to choose. If "The Mac is always correct..." is selected, the plug-in will treat the Mac entry as being correct. If "The Pocket PC is always correct" is selected, the plug-in will treat the Pocket PC entry as being correct. Please note that this setting is not used by all of the plug-ins, nor is it consulted in any situation other than a conflict as described above.

This option also lets us select custom synchronization applications to run each time a synchronization occurs. These applications will run before synchronization occurs, and PocketMac Pro will wait for the application to quit before starting the next step of the synchronization. To add applications to this list, click on the "+" button and select a files using the "Open" dialog box that appears. To delete applications from this list, select the file(s) and click on the "-" button.

3 Connecting your Pocket PC

There are 3 ways to connect your Pocket PC to your Mac with PocketMac Pro:

1. USB Cradle/cable
2. TCP/IP Network connection
3. Bluetooth

Please note that when disconnecting and then reconnecting a device, it's necessary to wait approximately 15-20 seconds between connections so that PocketMac Pro can "clean up" and get ready for the next connection.

3.1 USB Cradle/cable

Universal Serial Bus (USB) is probably the most common way to connect a Pocket PC to a Mac. Most Pocket PCs today come with a cradle that has a USB cable attached to it or USB cable that plugs directly into the bottom of the Pocket PC.

A typical USB port from a "classic" iMac is shown here. Note the "trident" design on the top of the connector's plastic housing; it is this symbol that tells us we have a USB connector.

For best results with PocketMac Pro, we recommend plugging the USB cable directly into the Macintosh's USB ports. These ports can be found either on the back or side of the Mac, depending on the make and model.



Please note that neither the Mac nor the PocketMac Pro software will recognize that a Pocket PC is connected unless it's actually turned on placed in the cradle or connected to the other end of the cable. Or, in other words, you can leave your Pocket PC's cradle or cable connected indefinitely; nothing will happen until the Pocket PC is turned on and connected to the other end of that cradle/cable.

Due to the nature of Pocket PCs, we *do not* recommend using a USB hub. You may find that you are unable to establish a connection if you use a hub such this.

3.2 TCP/IP Network connection

PocketMac Pro is now much more integrated with the Pocket PC's ActiveSync. That means that there's less to learn and interact with on the Pocket PC when using PocketMac Pro.

Unlike previous versions of PocketMac Pro, where we had to manually enter the IP address of the Pocket PC into the PocketMac Pro software and then start something on the Pocket PC in order to connect the two, this version of PocketMac Pro is much simpler. In fact, we will not need to enter an IP address anywhere. Once installed on your Mac, PocketMac Pro is ready for a USB connection or a TCP/IP connection at any time. We do not have to tell PocketMac Pro to "switch" between the two.

Instead, we'll first connect via USB to allow PocketMac Pro to configure the Pocket PC's ActiveSync settings. We only have to do this once -- After that, the Pocket PC will have a standard ActiveSync partnership called "PocketMac Pro".

So, if we now want to connect via TCP/IP, we'll just select the ActiveSync partnership on the Pocket PC and then connect to your Mac via ActiveSync. To do that, we'll start ActiveSync on the Pocket PC; choose "Tools", then "Options" from the menu at the bottom, as shown here. We'll then select the "PocketMac Pro" partnership, and click the "ok" in the upper right-hand corner. To connect to PocketMac Pro, we'll simply click the "Sync" button on the main ActiveSync window -- That's all there is to it.

Please note, though, that the "Sync" button doesn't actually sync the device, but rather just establishes the connection between the Pocket PC and PocketMac Pro.

3.3 Bluetooth connection

New to PocketMac Pro 3.0 is the ability to connect wirelessly via Bluetooth. Bluetooth is a short-range wireless specification for connecting computing devices and peripherals; one chief benefit of the technology is that it eliminates wires and cables that have traditionally connected computing devices.

To connect your Pocket PC to PocketMac Pro via Bluetooth, your Pocket PC device must have Bluetooth support built-in or provided by means of a Bluetooth peripheral device (usually a card). Additionally, your Macintosh must have Bluetooth hardware as well. A few of the newest Macintoshes have Bluetooth support built in, and support can be added to many others by means of a small USB adapter, manufactured by D-Link, Asante, AmbiCom, and others.

Once your Bluetooth hardware is installed on your Mac, Bluetooth support should be enabled¹. You will now need to set up the Pocket PC device now so that it can find your Macintosh. Consult your Pocket PC/additional Bluetooth hardware device's documentation for more

¹ <http://docs.info.apple.com/article.html?artnum=25410>

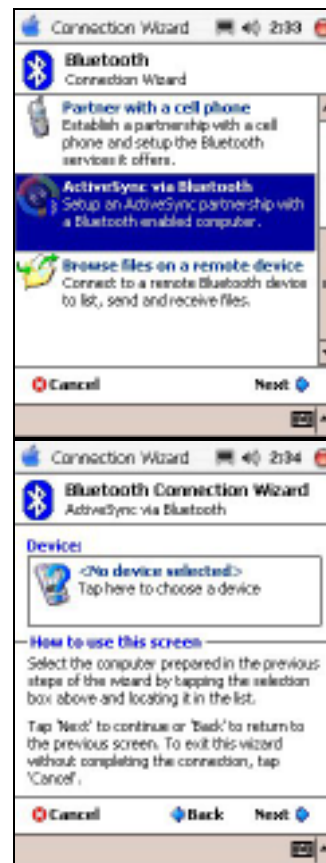
information on this topic. This setup process involves similar procedures on both devices in which you instruct one device to find the other and establish a wireless connection with that other device.

The setup process is similar on the Pocket PC device, although it varies slightly with the version. On the latest Pocket PC devices with Bluetooth support built in, From the Today screen, tap "Start," and "Bluetooth Manager." The first screen that displays is My Shortcuts. Bluetooth Manager can also be accessed from the Today screen by tapping the "Bluetooth" icon, then "Bluetooth Manager." Please note, opening Bluetooth Manager automatically turns on Bluetooth on your Pocket PC device. If your Mac has Bluetooth support enabled, you should see it in the Bluetooth browser located in the Bluetooth Manager screen.

We'll next need to help the Pocket PC find and connect to your Mac. The steps to accomplish this are:

1. From the Today screen, tap "Start," and "Bluetooth Manager."
2. Tap the "New" menu, then "Connect!"
3. Double-tap "ActiveSync via Bluetooth"

4. Continue tapping "Next" until you get to a screen that says "Device: <No Device selected>".
5. Tap where it says "Tap here to choose a device". The Bluetooth Manager will attempt to find your Macintosh.



6. When the Bluetooth Manager has found your Macintosh, tap where it displays your Macintosh.
7. The Bluetooth Manager will then take you to a screen that says "Shortcut creation". Tap the finish button to connect.
8. When you are done, you will end up with a shortcut similar to the one shown here that you can use to connect on subsequent syncs.





Older Pocket PC devices with built-in Bluetooth support have a slightly different setup procedure². Other Pocket PC devices that use additional hardware to support Bluetooth connectivity may have other procedures for setting up wireless connectivity; please refer to the manufacturer's instructions if you have one of these devices.

Once you have established a Bluetooth connection between your Macintosh and your Pocket PC, you need only instruct PocketMac Pro to use this connection for wireless synchronization. To do this, select "Connect via..." from the PocketMac Pro status menu at the top right of your Macintosh desktop, and check "Bluetooth." All future synchronizations will use the Bluetooth wireless connection until you change this setting.

4 Running PocketMac Pro 3.0

When a device is connected and recognized by the system, the main PocketMac Pro icon in the status bar will change from "off" when no Pocket PC is present and then to "on" when a Pocket PC is connected and/or synchronizing, as shown here:

<i>This image</i>	<i>indicates...</i>
	No Pocket PC connected
	Pocket PC connected & ready

Note: For users who are upgrading from Pro 2.0 and prefer that way of interacting with the Pocket PC, you can always display that window by choosing "Show PocketMac" from the PocketMac Pro icon in the menu bar.

² For an example of this (the 3900 series Compaq iPAQs), see http://h20000.www2.hp.com/bizsupport/TechSupport/Document.jsp?objectID=PRI_400_0_33929864_3672052&locale=en_US.

5 Browsing/Copying files

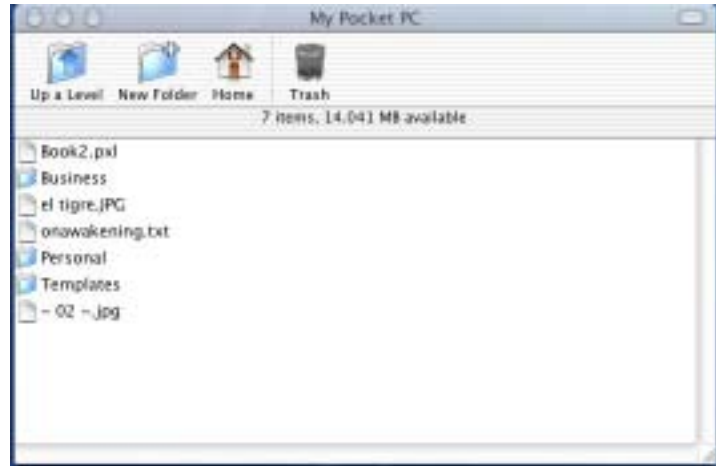
Browsing and copying files to and from the Pocket PC is done via the Browse window. Additionally, PocketMac Pro 3.0 mounts Pocket PC & Pocket PC storage cards on the desktop, allowing you easy, direct access to your Pocket PC's files and folders. You need only double-click on these icons to browse your Pocket PC.

When the Browse window is displayed for the first time, it will automatically list the contents of your Pocket PC's "My Documents" folder.



Along the top of the Browse window, there is a toolbar with 4 items in it, as shown here.

1. "Up A Level" will display the contents of the Pocket PC "parent folder" of the one currently being displayed.
2. "New Folder" will prompt for a folder name, then create a new folder with that name.
3. "Home" will take us back to the Pocket PC's "My Documents" folder.
4. "Trash" will delete the currently selected file.

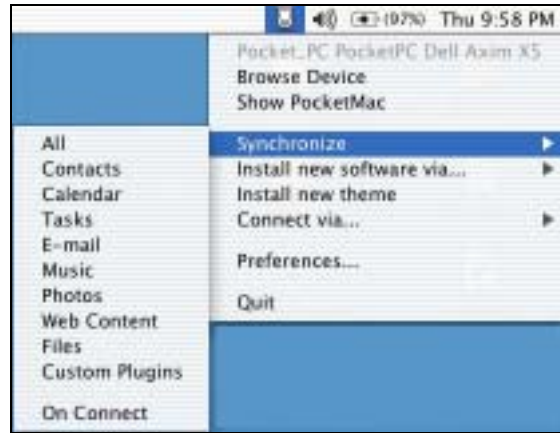


To copy a file to the Pocket PC, simply drag the file from the Mac (Finder) to the Browse window. Similarly, to copy a file from the Pocket PC to the Mac, simply click on the file you want to copy in the Browse window, and drag it to the Mac.

Alternatively, if you prefer, you can drag the file to any of the mounted images on your desktop.

6 Synchronizing

Here we'll review the different options, features, and so on of each of the different sync types and plug-ins. To synchronize your Mac and your Pocket PC, select the synch options you prefer from the PocketMac Pro status menu at the top right of your Macintosh desktop; this contains options for individual synchronizations by type and an "All" option that synchronizes all data according to the preferences selected in the PocketMac Pro Preferences screen.



Alternately, if you have selected "Show PocketMac Pro" from the PocketMac Pro status menu, you can click on the "Synchronize" icon in the PocketMac Pro window.

Please note that for best results with the Entourage Plug-ins, we recommend launching Entourage before synchronizing and ensuring that you are running the latest version of Entourage, which at the time of this writing is 10.1.4.³

6.1 All

Selecting the "All" option for synching simply performs all synch operations that you have selected in PocketMac Pro's Preferences screen, one after the other.

6.2 Contacts

Selecting the "Contacts" option and choosing a plug-in means that when we sync, PocketMac Pro will retrieve the contact records from our Pocket PC and then compare that data against some other data, applying the changes and differences as needed.

When we click the "Synchronize" button with the contacts option checked, a separate window will appear, with a progress bar and a status message. This is the actual plug-in which does the work of syncing the data for us. When it has finished, it will quit itself, and PocketMac Pro will then apply the changes in contact data (if any) to the Pocket PC and then move on to syncing Calendar items.

Please note that before synching with any of the Entourage plug-ins, Entourage itself should be started and running on your Mac.

6.2.1 Entourage Contacts Plug-in

³ Entourage updates are available free of charge from <http://www.microsoft.com/mac>

The Entourage Contacts plug-in will sync Pocket PC contacts⁴ with those stored in Microsoft's Entourage application. For best results, we recommend that users update to the current version of Microsoft Entourage (10.1.4 as of this writing).

6.2.2 Address Book Plug-in

The Address Book plug-in will sync Pocket PC contacts with those stored in the OS X Address Book that comes standard with every OS X installation.

6.2.2 Now Contacts Plug-in

The Now Contact plugin relies on the Now Contact Address Book Sync tool to sync with the Pocket PC. The Address Book Sync tool and Now Contact must be installed on the Mac in order for this plugin to do its work. When the plugin launches, it will attempt to locate and launch the Address Book Sync tool. If it cannot find the Now Contact Address Book Sync tool, it will prompt with a chooser asking you to find the Address Book Sync tool for it. We are looking into making this simpler and more automatic in the near future.

6.3 Calendar

6.3.1 Entourage Calendar Plug-in

The Entourage Calendar plug-in will sync Pocket PC calendar entries with those stored in Microsoft's Entourage application. For best results, we recommend that users update to the current version of Microsoft Entourage.

6.3.2 iCalCalendar plug-in

The iCalCalendar plug-in will synchronize Pocket PC calendar entries with an iCal calendar called "PocketMac Pro".

6.4 Tasks

6.4.1 Entourage Tasks Plug-in

The Entourage Tasks plug-in will sync Pocket PC tasks with those stored in Microsoft's Entourage application. For best results, we recommend that users update to the current version of Microsoft Entourage.

6.4.2 iCal Tasks plug-in

The iCal Tasks plug-in will synchronize Pocket PC tasks with those stored in iCal.

⁴ Details on each of the plug-in's sync capabilities can be found in the release notes for PocketMac, which are installed to the Applications/PocketMac Bonus Software folder.

6.5 E-mail

Selecting the "E-mail" option and choosing a plug-in means that when we sync, PocketMac Pro will retrieve e-mail messages from our Macintosh inbox and then compare that data against our inbox on the Pocket PC, applying the changes and differences as needed. We can also limit the number of unopened messages we synch using the preferences screen in PocketMac Pro.

When we click the "Synchronize" button with the E-mail option checked, a separate window will appear, with a progress bar and a status message. This is the actual plug-in which does the work of syncing the data for us. When it has finished, it will quit itself, and PocketMac Pro will then apply the changes in inboxes (if any) to the Pocket PC and then move on to syncing Music items.

Please note, it is necessary to create a new service in your Pocket PC inbox application for use with PocketMac Pro. To do this, start the inbox application on your Pocket PC and select "Accounts" and then select "New Account" from the menu. In the subsequent setup screens, please allow the Pocket PC "wizard" software to guide you through the new account creation process. When prompted for your email address, enter the email address you use on your Mac to send & receive mail. You will then be prompted for several other items, which you should supply as follows:

Your name:	[Your name]
User name:	[Your Macintosh user name, ex: tomk]
Password:	[Your Macintosh password]
Account Type:	POP3
Name:	PocketMac
Incoming Mail:	PocketMac
Outgoing Mail:	PocketMac
Domain:	[leave blank]

That's it. (We tried to automate this process to make it simpler, but unfortunately, the Pocket PC doesn't give us direct access to this information.)

6.5.1 Entourage Email Plug-in

The Entourage Tasks plug-in will sync new, unread messages to your Pocket PC. That is, all new messages which you've not yet read since the last sync will be copied to the Pocket PC's Inbox folder.

6.4.2 Apple Mail Email plug-in

The Apple Mail Email plug-in will sync new mail messages to your Pocket PC. That is, all new messages in the Inbox since the last sync will be copied to the Pocket PC's Inbox folder.

6.6 Music

The Music plug-in will sync Pocket PC music files with those stored in iTunes' "PocketMac Mobile Tunes" playlist. This playlist is created automatically during PocketMac Pro installation. Do not delete or rename this playlist if you wish to synch music files between your Mac and your Pocket PC.

When we click the "Synchronize" button with the Music option checked, a separate window will appear, with a progress bar and a status message. This is the actual plug-in which does the work of syncing the data for us. When it has finished, PocketMac Pro will move on to syncing the next item.



6.7 Photos

The Photos plug-in will sync Pocket PC digital picture files with those stored in iPhoto's "PocketMac Mobile Album" album. This album is created automatically during PocketMac Pro installation. Do not delete or rename this album if you wish to synch digital picture files between your Mac and your Pocket PC.

When we click the "Synchronize" button with the Photos option checked, a separate window will appear, with a progress bar and a status message. This is the actual plug-in which does the work of syncing the data for us. When it has finished, PocketMac Pro will then move on to syncing the next item.



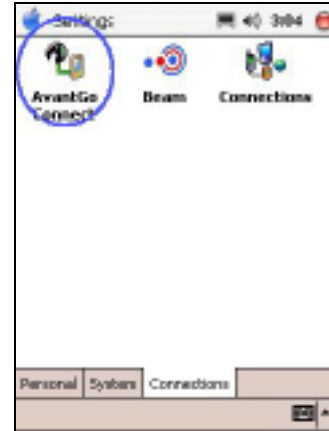
6.8 Web/Mobile Favorites

6.8.1 AvantGo Synchronization

If you have a new Pocket PC 2003 device, PocketMac will install the AvantGo files on to your Pocket PC as part of the first sync.

After that, PocketMac will use the AvantGo software already on the Pocket PC to perform a sync.

To change your AvantGo settings, please use the Pocket PC's AvantGo control panel, located in "Start"->"Settings"->"Connections".

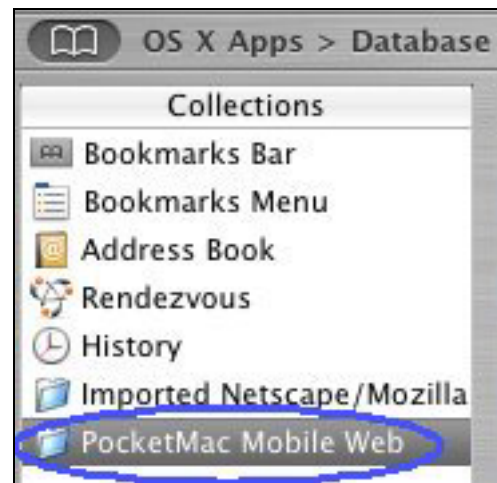


6.8.2 Mazingo Synchronization

PocketMac will use the Mazingo software already on the Pocket PC to perform a sync. If you do not yet have the Mazingo client on your Pocket PC, it can be downloaded from <http://www.pocketmac.net> in the "downloads" section.

6.8.3 Mobile Favorites Synchronization

The PocketMac Mobile Favorites plug-in will sync Pocket PC web favorites with bookmarks and favorites stored in Safari, Internet Explorer, or OmniWeb on your Mac. PocketMac Pro creates its own bookmark and favorites lists automatically during installation. You can save any links or sites in these lists on your Mac browser if you'd like to make them available on your Pocket PC. Do not delete or rename these lists if you wish to continue syncing web favorites between your Mac and your Pocket PC.



When you click the "Synchronize" button with the Web Content option checked, a separate window will appear, with a progress bar and a status message. This is the actual plug-in which does the work of syncing the data for us. The plug-in will retrieve the favorites list, and then actually connect to the internet and download the entire sites' contents to your Pocket PC. The downloaded sites will then be available via a shortcut in the Start menu. The advantage of this is that you can read your favorite sites on your Pocket PC -- whether it's connected to the internet or not. When it has finished syncing, PocketMac Pro will move on to syncing the next item.

6.9 Files

Syncing files and folders between a Pocket PC and a Mac is very straightforward. We'll simply select or create a folder on the Mac with which to sync.

Please note that it's generally a good idea to start with a new empty folder or one containing only those documents we wish to sync. Selecting a folder with lots of large files means the sync will take longer than we might otherwise want. With PocketMac Pro 3.0, PocketMac pre-selects a good default folder for you, which it will automatically create on the first sync.

When we click the sync button, and "Files" sync is checked, PocketMac Pro will look through the files and folders contained within the Pocket PC's "My Documents" folder. It will then compare the dates of the files on the Pocket PC with the dates of similarly named files on the Mac. PocketMac Pro will then copy files as needed to ensure that the most recent edition of each file is on both the Pocket PC and the Mac.

6.10 Custom Plugins

Selecting the "Custom Plugins" option runs any custom synchronization without running any other synch operations. These custom synch applications are determined by the settings in the PocketMac Pro Preferences screen; see section 2.2.9, above.

6.11 On Connect

This menu item can be checked to cause PocketMac Pro to synchronize your data immediately when a Pocket PC is connected to the Mac.

7 Installing new Pocket PC software

PocketMac Pro 3.0 makes it even easier than ever to install new Pocket PC software.

7.1 Cab files explained

Almost all Windows CE/Pocket PC software is installed via what are called cabinet files, or "CABs" for short. CAB files are analogous to StuffIt archives or ZIP files, in that they are files, which in turn, contain other files.

The difference is that we'll never need to open CAB files directly. Instead, we can just use the PocketMac Pro status item's "Install new software..." menu and choose "CAB file". PocketMac Pro then does the work of installing the software for you.

The trick comes in identifying the right CAB files to use; usually, three CAB files are provided with a Pocket PC software purchase. However, it's usually very easy to determine which CAB file to use based on the name of the cab file, as shown here.

<i>If the CAB name contains...</i>	<i>then it is meant to be installed on...</i>
<i>ARM or 2577</i>	A Compaq iPAQ or any Pocket PC 2002/2003 units
<i>MIPS or 4000</i>	A Casio E-125/ EM-500 device
<i>SH3 or 10003</i>	An HP Jornada 54x device

7.2 Windows Installers/PMCabTool

The only problem with CAB files is that many Pocket PC software vendors like to find clever ways to package the CAB files in such a way that they're usually difficult to get to on a Mac. For example, they might put the CAB files into a pleasant Windows installer application, which of course, would keep it from running on a Mac.

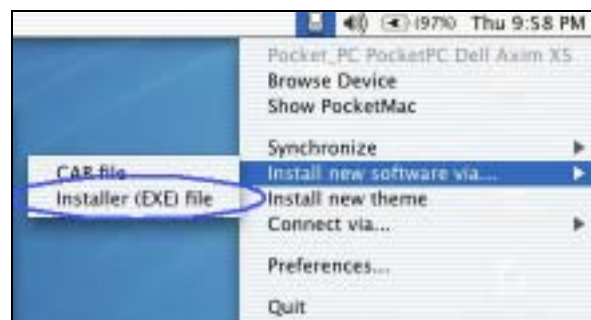
If we don't automatically get CAB files with our purchase, we can always ask the vendor to provide them. After all, they've got to create them anyway, so they're usually quite willing to email them as a courtesy. Yet, while most vendors will provide the CAB files simply for the asking, some do not. To help deal with this problem, there is PMCabTool for OS X.

PMCabTool works by searching through Windows installer files such as EXEs (Windows executable files, often used for installations) or MSIs (Microsoft Installer files) and looks for Pocket PC CAB files inside of those installer files.

Please note that this is very much a brute force approach and will only work some of the time. PMCabTool's operation is very simple. We can just use the buttons to locate a Windows installer file, and a Mac folder to hold any CAB files that it may find. Then we click the "Extract" button. PMCabTool will automatically attempt to install any CAB files it finds to the Pocket PC for you. That's all there is to it.

Please note that PMCabTool is free to all PocketMac Pro users, and can be accessed from the PocketMac Pro status item menu by choosing "Install new software via..." and then selecting "EXE file".

It's also in your "Applications" folder in the PocketMac Bonus Software folder.



7.3 Mac Installers/PocketMac Theme Installer

CAB files and PMCabTool are both useful, but the PocketMac Pro community wanted something better.

PocketMac Pro 3.0 offers Pocket PC software developers the ability to create their own native Mac-based installers for the Pocket PC.¹¹ For more information, please visit our website at <http://www.PocketMac.net/pocketpcdeveloper.htm>.

One such installer is included with PocketMac Pro and will install our popular PocketMac Theme for Pocket PCs, which actually replaces the look & feel of Pocket PCs with Macintosh buttons & backgrounds. We are already working with other software vendors to get their software installable via a Mac, and expect to have a full list of them available shortly.

8 Pocket PC Word, Excel & Note documents

Although there is no native Mac support for any of the "Pocket" file formats created by applications such as Pocket Word, Pocket Excel and the Notes application, PocketMac Pro 3.0 comes with readers for all of these file types. (These reader applications are installed in "Applications" in the "PocketMac Bonus Software" folder.)

What this means is that if you create a Word document on your Pocket PC, you can now open it on your Mac. Similarly, if you have an important Pocket Excel spreadsheet, you can now open it on your Mac as well.

8.1.1 PocketMac Word Reader

The PocketMac Word Reader software can open and display the text from Pocket Word documents (".psw" files) and Pocket PC Notes documents (".pwi" files), as shown here. You can then save the document into a more common, Mac-friendly format like Rich Text (".rtf") so that it can be used in other Mac software.

8.1.1 PocketMac Excel Reader

The PocketMac Excel Reader software can open and display the data from a Pocket Excel spreadsheet. It offers the ability to copy the data into the pasteboard so that you can then paste that data into an Excel or Apple Works spreadsheet without losing your valuable data.

9 iSync integration

¹¹ In fact, if they don't have a Mac yet, PocketMac.net offers the creation of Mac installers as a service.

PocketMac Pro 3.0 now offers integration with Apple's iSync product for the first time. This means that you can use all of the iSync settings to sync your Pocket PC. Specifically, you can configure iSync (and therefore, PocketMac Pro) to automatically synchronize every X minutes so that your iSync devices and your Pocket PC stay as up-to-date as possible.



10 Support & Troubleshooting

If you need support for PocketMac Pro, please contact us through one of the following means:

- Through our website at <http://www.PocketMac.net/support.htm>. This form will get you in touch with our engineers who will be happy to help solve whatever might be wrong. Our turnaround time for most support requests is 24-48 hours.
- Through our support documents located at <http://www.PocketMac.net>

Most support issues can be easily resolved with an email or two, but we're happy to help even on more complex issues.

11 Thank you

Once again, thank you for your purchase. We thank you for being a part of a community that believes in supporting innovative software solutions.

12 Appendix A: Firewalls

Norton Personal Firewall

To configure Norton Personal Firewall (NPF) to interact nicely with PocketMac Pro, we have to allow access to certain specific "ports" used by the Pocket PC. Although we'll just list the ports here for reference, more detail is available online.²

² <http://support.microsoft.com/support/kb/articles/Q259/3/69.ASP>

To allow access to these ports from within NPF, open the settings window. Then, click the "new" button in the lower left hand corner. NPF will display a window (shown here) where you can define the parameters of a service. Any "Service Name" will do, though in this example, we'll use "Active Sync 1", and so on. We'll be creating four such services; for the "Service Port", we'll enter each of these values, one at a time:

- 990
- 999
- 5678
- 5679

For each service, then, click the "save" button to add it to the list. You will then have four possible access options for each of these new services we just created. Please note, ActiveSync will not work properly unless access is allowed to all four ports listed above.

We'll choose "Deny access only from addresses in list" for each of the "Active Sync" services, and leave the list empty. This is probably more secure and leaves us the option of always adding something later if we wanted to. (This is the way Norton has file sharing, etc. configured as well.) We're now done configuring Norton Personal Firewall so that it can play well with PocketMac Pro.³

³ Thanks to David Dickey for the details.