



## **PocketMac Backup 1.0 Installation & Setup**

PocketMac Backup Website:

<http://www.pocketmac.net/backup.html>

E-mail: [PocketMac@PocketMac.net](mailto:PocketMac@PocketMac.net)

Technical support: <http://www.PocketMac.net/support.htm>

Copyright 2001-2003 Information Appliance Associates

PocketMac Backup 1.0 Installation & Setup ..... 1

1 Getting Started... ..... 3

2 Launching PocketMac Backup for the First Time ..... 5

3 Backing Up Your Pocket PC Data With PocketMac Backup.. 6

4 Restoring Your Pocket PC Data With PocketMac Backup ..... 8

5 Support & Troubleshooting ..... 9

6 Thank you ..... 9

# 1 Getting Started...

This manual is designed to offer a complete tour of PocketMac Backup™. So, let's get started...

## ***1.1 Basic System Requirements***

Please ensure that your system meets the following basic requirements before using PocketMac Backup .

- PocketMac 3.0 or other sync software for Macs/Pocket PCs
- Pocket PC 2002/2003 device
- Free disk space on the Mac to accommodate the backed-up files.

If it does, we're all set to go!

## 1.2 Install/Uninstall

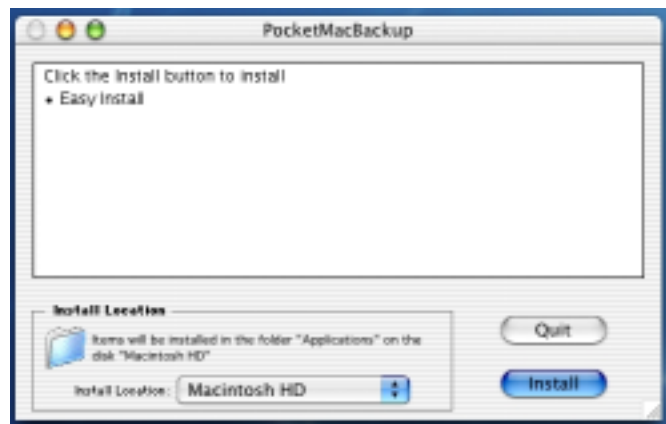
To install PocketMac Backup on your Mac, unpack the SIT or HQX file you downloaded and double-click on the PMBackup icon the file unpacks. PocketMac Backup installation requires administrative privileges, so you are next prompted to enter your password or phrase.

This is the username/password you created when you set up your Mac for the very first time.



If you are attempting to install PocketMac Backup using an account on your Mac that does not have administrative privileges, installation will fail at this point. You must install PocketMac Backup using a user account on your Mac that has administrative privileges.

Once you have entered your password, the PocketMac Backup installation screen appears. This screen lets you select the location on your Mac in which the PocketMac Backup software is installed. The default location is the "Applications" folder on your main hard drive. We recommend that all users install PocketMac Backup to this location; only advanced users should select a different location.



At the top left of the PocketMac Backup installation screen, the "Easy Install" option is selected by default. To start the installation, click on the "Install" button on the lower right side of the installation screen.

If you should later decide to *uninstall* PocketMac Backup, double-click on the PMBackup icon. You will be prompted for your Mac system password; enter it. When the PocketMac Backup installation screen appears, select "Uninstall" from the dropdown menu box in the upper left side of the PocketMac Backup installation screen. Next, click "Uninstall" from the lower right side of the PocketMac Backup installation screen. When install has concluded, select "Quit" from the lower right side of the screen.


## 2 Launching PocketMac Backup for the First Time

To start PocketMac Backup, go to your main "Applications" folder and find PocketMac Backup. Then double-click to start it. Upon starting, PocketMac Backup will prompt you for your registration information (see below).

### 2.1 Entering the Registration Information

When PocketMac Backup is launched for the first time, it will ask for the registration information by displaying the "Register Software" screen, as shown here.

You can register the software by entering your name, email address, and the serial number from the confirmation email you received as part of the purchase process. [Click here to have your confirmation email resent.](#) (Please note that serial numbers are case-sensitive. This means that "xyz" is not the same as "XYZ" nor "xYz", etc.) **We highly recommend copying (CMD+"C") and pasting (CMD+"V") the serial number to ensure no errors in transcribing it.**



The screenshot shows a "Register Software" dialog box with the following content:

Your Name:	Tom Kha
E-Mail Address:	pocketmac@pocketmac.net
Serial Number:	556-0003-ABCD-abcd

Buttons: Cancel, Register

The Register Software window will connect to the Internet and "activate" the software for this Macintosh. Each serial number can be activated on a maximum of two Macintoshes.

PocketMac Backup will automatically quit if the Register Software window is unable to activate the software. If you would like to launch it manually, you can do so from an alias in the "Applications" folder, inside the "PocketMac Bonus Software" folder.

When you're done entering your registration information, click the Register button to activate the software.

## 3 Backing Up Your Pocket PC Data With PocketMac Backup

### 3.1 Full Vs. Selective Backup

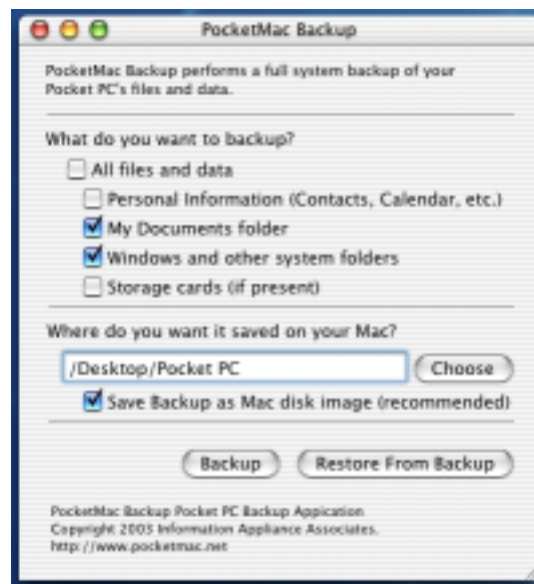
When you start PocketMac Backup, you will see the following screen. You can backup all of your Pocket PC data to your Mac from this one screen.

The first part of this screen asks what portion of the Pocket PC you want to backup. There are several options that allow you to backup a portion or the entire Pocket PC. Specifically...

- *All files and data*—This options allow you to backup your entire Pocket PC—that literally means everything you have on your device.
- *Personal Information (Contacts, Calendar, etc.)*—This allows to only backup the personal data for everything from tasks, calendars, contacts, and more.
- *My Documents folder*—This allows you to backup only the data and files in your "My Documents" folder.
- *Windows and other system folders*—This allows you to backup system drivers and all the files that make the system files on your Pocket PC.
- *Storage cards (if present)*—This allows to backup whatever data you have on your storage cards.

**We highly recommend doing a full system backup the first time you run PocketMac Backup. This will ensure that all of your Pocket PC data is safely backed up.** (Please note: the full system backup can take quite a long time depending on how much data you have on your Pocket PC.)

All you have to do at this point is choose what type of backup you want to do and then there's...

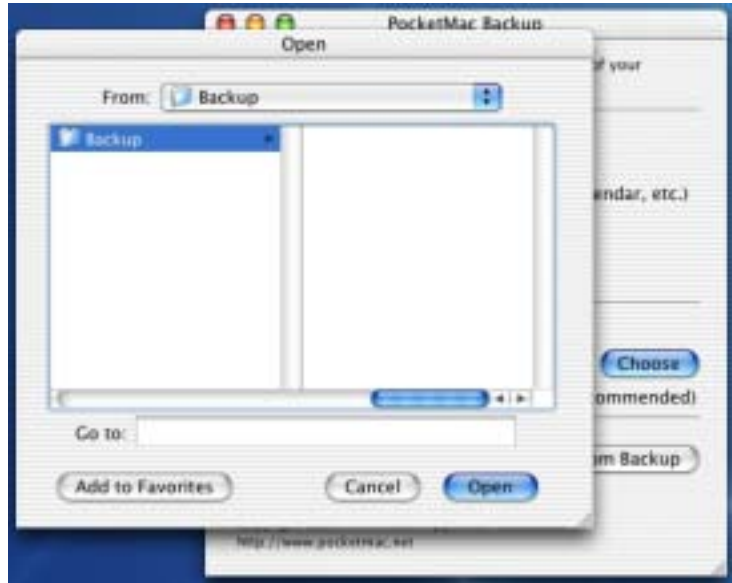


## 3.2 Choosing The Location & Format Of The Backup File

The next step, after you've chosen what level of backup you'd like to perform, the next step is to choose the location and format of the backup file to be created.

First, choose where you'd like the backup file located (The default choice is your Desktop). Click on the "Choose" button, then go through the various finder windows to find exactly where you'd like the backup file located.

The second choice of format allows you to specify the backup data as a Disk Image. This option is highly recommended. However, if you'd like just a standard folder, uncheck this option and you'll be all set.



### 3.3 Starting The Backup

To start the backup, click the "Backup" button.

A status bar will appear telling you exactly which files are being copied. Please note: for a full backup, the backup process can take a little while.



When the backup is complete, if you selected a Disk Image to be created, one will appear in the folder you specified as per the following screenshot. **You have just backed up your system!**



## 4 Restoring Your Pocket PC Data With PocketMac Backup

### 4.1 Full Restore

To restore all of your Pocket PC data, leave "All files and data" checked and click "Restore From Backup". All files and data will be copied from the backup you made to the Pocket PC. You'll be all set!



## 4.2 Selective Restore

Just as you can selectively decide what you backup with PocketMac Backup, you can selective restore files as well.

Let's say your "My Documents" and several key Windows system files or folders got messed up or you deleted files you didn't mean to. You can check only the "My Documents" and "Windows and other system folders" option.

Then press the "Restore From Backup" button and you'll be all set!



## 5 Support & Troubleshooting

If you need support for PocketMac Pro, please contact us through one of the following means:

- Through our website at <http://www.PocketMac.net/support.htm>. This form will get you in touch with our engineers who will be happy to help solve whatever might be wrong. Our turnaround time for most support requests is 24-48 hours.

Most support issues can be easily resolved with an email or two, but we're happy to help even on more complex issues.

## 6 Thank you

Once again, thank you for your purchase. We thank you for being a part of a community that believes in supporting innovative software solutions.