



## **PocketMac Lite 3.0 Installation & Setup**

PocketMac Lite Website: <http://www.PocketMac.net>

E-mail: [PocketMac@PocketMac.net](mailto:PocketMac@PocketMac.net)

Technical support: <http://www.PocketMac.net/support.htm>

Copyright 2001-2004 Information Appliance Associates

PocketMac Lite 3.0 Installation & Setup ..... 1

1 Before you start - configuring your Mac and Pocket PC ..... 3

2 Launching PocketMac Lite for the First Time ..... 7

3 Connecting your Pocket PC ..... 8

4 Running PocketMac Lite 3.0..... 11

5 Browsing/Copying files..... 11

6 Synchronizing..... 12

7 Installing new Pocket PC software..... 13

8 iSync integration ..... 14

9 Support & Troubleshooting..... 14

10 Thank you..... 15

11 Appendix A: Firewalls ..... 15

# 1 Before you start - configuring your Mac and Pocket PC

If you're new to PocketMac Lite, welcome.

If you've used previous versions of PocketMac Lite, there are a few things that are different about this version you should know about.

In this version, there's no longer any need to configure ports or firewalls. Also, you do not have to manually install *anything* to your Pocket PC. Additionally, the look of PocketMac has changed quite a bit. All of the plug-ins have been completely rewritten, giving them dramatic speed improvements, as well as improved reliability.

This manual is designed to offer a tour of the new system, from the installation of PocketMac to the installation of new Pocket PC software. Let's get started...

## ***1.1 Basic System Requirements***

Please ensure that your system meets these basic requirements before using PocketMac Lite. This can help to save time-consuming support incidents and make the overall experience much smoother.

For your Pocket PC, please note that PocketMac Lite supports a wide variety of the most popular Pocket PC devices, with USB, Bluetooth, or Aiprot/other network connections. A current list can be found at the PocketMac Lite website at <http://www.pocketmac.net/products/pmlite/devices.html>. Other models will be added as they are released and we can test them with the software.

## 1.2 Install/Uninstall

To install PocketMac Lite 3.0 on your Mac, double-click on the PM3-LITE icon. PocketMac Lite installation requires administrative privileges, so you are next prompted to enter your password or phrase.

This is the username/password you created when you set up your Mac for the very first time.



If you are attempting to install PocketMac Lite using an account on your Mac that does not have administrative privileges, installation will fail at this point. You must install PocketMac Lite using a user account on your Mac that has administrative privileges.

Once you have entered your password, the PocketMac Lite installation screen appears. This screen lets you select the location on your Mac in which the PocketMac Lite software is installed. The default location is the "Applications" folder on your main hard drive. We recommend that all users install PocketMac Lite to this location; only advanced users should select a different location.



At the top left of the PocketMac Lite installation screen, the "Install" option is selected by default. To start the installation, click on the "Install" button on the lower right side of the installation screen. When the installation is complete, you will be prompted to restart your Mac.

If you should later decide to *uninstall* PocketMac Lite, double-click on the PM3-LITE icon. You will be prompted for your Mac system password; enter it. When the PocketMac Lite installation screen appears, select "Uninstall" from the dropdown menu box in the upper left side of the PocketMac Lite installation screen. Next, click "Uninstall" from the lower right side of the PocketMac Lite installation screen. When install has concluded, select "Quit" from the lower right side of the screen.

## 1.3 Firewalls, File sharing and PocketMac Lite

Earlier versions of PocketMac Lite required manual configuration of firewalls on the Mac, but PocketMac Lite 3.0 takes care of all of this for you. During PocketMac Lite installation, the

PocketMac Lite installer detects the system firewall and configures it for use with PocketMac Lite.

If you are unable to synchronize your Mac with your Pocket PC device, or if you install or reconfigure one of these firewalls on your Macintosh subsequent to PocketMac Lite installation, it may be necessary to manually configure your firewall.

Should it be necessary to manually configure your firewall, they are included as an appendix to this document.

### 1.3.3 Products with file-sharing features

Many products today offer the ability to share files; that is, if we're running a copy of XYZ software on one Mac, we can access the XYZ software on another Mac through the XYZ software's filesharing features.

Products that may have file-sharing features that could interfere with PocketMac Lite include:

- FileMaker (Server)
- Dave

This is by no means an extensive list, however.

Please note that this is more intended as a general notice that such product may or may not interfere with PocketMac Lite. We believe it's quite possible that these applications can be configured to coexist with PocketMac Lite.

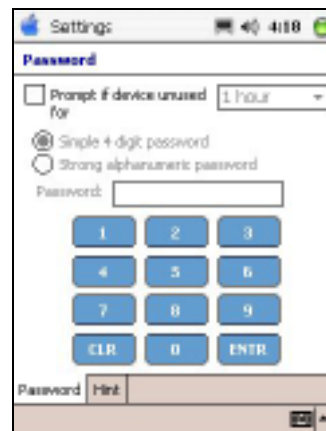
## 1.4 Pocket PC configuration

### 1.4.1 Pocket PC Password Protection

The main Pocket PC issue that can cause trouble for PocketMac Lite is that of password protection. PocketMac Lite does not currently support password-protected devices.

Password protection must be turned off for PocketMac Lite to successfully connect to your Pocket PC; that is, it is not enough to simply login to your device, you must actually turn off the password protection.

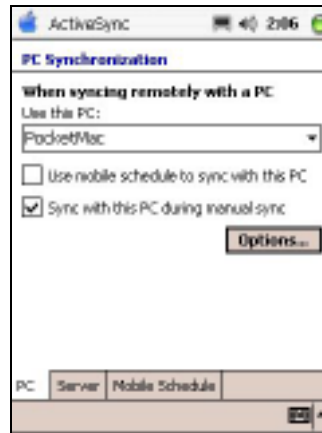
To do this, tap on your Pocket PC's "Start Menu", and choose "Settings". Then, tap on the "Password" control panel. Please ensure that its password settings are set to "No password" as shown here.



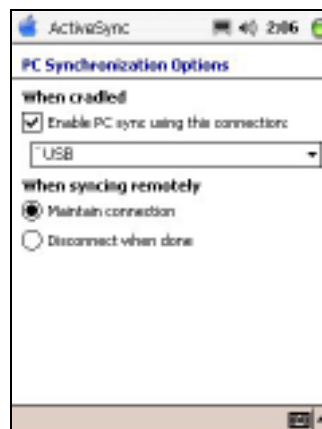
## 1.4.2 Pocket PC Active Sync settings

If you find that your Pocket PC is unable to maintain a connection over long periods of time, it may be related to the ActiveSync settings on the Pocket PC. If you are uncertain, you can check the settings on the Pocket PC by launching ActiveSync from the Start Menu. Then choose "Tools"->"Options" from the menu.

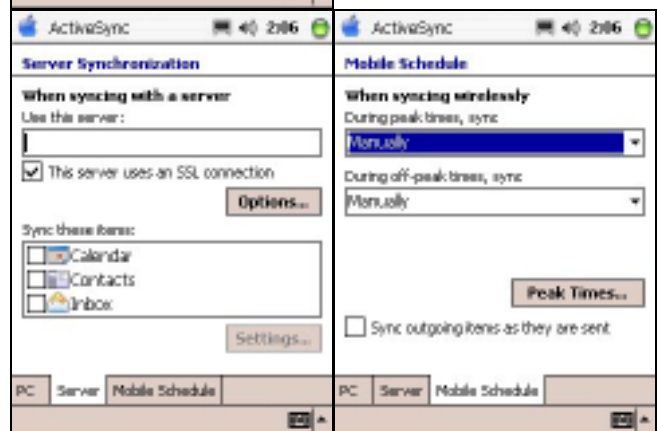
1. You should see a screen with three tabs ("PC", "Server", and "Mobile Schedule") along the bottom. On the first tab, the checkbox labeled "Use mobile schedule to sync with this PC" should be unchecked.



2. Additionally, the "Options" screen (displayed when you tap the "Options" button on the first tab) should show "Enable PC sync using this connection" and should be checked. "USB" should be displayed in the popup menu, and "Maintain connection" should be selected below.



3. On the "Server" tab, nothing should be checked or filled in. Likewise, both items on the "Mobile Schedule" tab should be set to "Manually".



## 2 Launching PocketMac Lite for the First Time

We recommend launching and configuring PocketMac Lite before connecting your device when starting it for the first time. This way, you can do all of the configuration work, and then connect your Pocket PC.

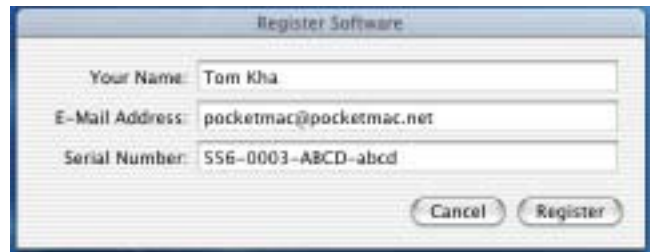
The PocketMac Lite installer adds a "PocketMac Lite" entry to your login items so that it will be started automatically when you start or log in to your Mac. The first time you start PocketMac Lite, you will be prompted for your registration information (see below). You can tell this status application is running because it places a PocketMac Lite status menu in the Mac toolbar on the upper left side of your Mac desktop, near the clock, volume, etc.

You can browse your Pocket PC and synchronize from this menu, as well as adjust your sync preferences. From this menu you can also start the PocketMac Lite application screen – just click on "Show PocketMac Lite" in the PocketMac Lite status menu. The PocketMac Lite screen that appears lets you synch and set preferences using icons and Mac menus. It also gives you a visual indication of your connection status between your Mac and your Pocket PC device. This connection status indicator is invaluable when you are setting up a new type of connection (see section 3, below).

### 2.1 Entering the Registration Information

When PocketMac Lite is launched for the first time, it will ask for the registration information by displaying the "Register Software" screen, as shown here.

You can register the software by entering your name, email address, and the serial number you received as part of the purchase process. (Please note that serial numbers are case-sensitive. This means that "xyz" is not the same as "XYZ" nor "xYz", etc.)



The Register Software window will connect to the internet and "activate" the software for this Macintosh. Each serial number can be activated on a maximum of two Macintoshes.

PocketMac Lite will automatically quit if the Register Software window is unable to activate the software. If you would like to launch it manually, you can do so from an alias in the "Applications" folder, inside the "PocketMac Bonus Software" folder.

When you're done entering your registration information, click the Register button to activate the software.

## 2.2 Configuring the Synchronization Preferences

In the Lite version of PocketMac, there are no preferences to configure.

## 3 Connecting your Pocket PC

There are 3 ways to connect your Pocket PC to your Mac with PocketMac Lite:

1. USB Cradle/cable
2. TCP/IP Network connection
3. Bluetooth

Please note that when disconnecting and then reconnecting a device, it's necessary to wait approximately 15-20 seconds between connections so that PocketMac Lite can "clean up" and get ready for the next connection.

### 3.1 USB Cradle/cable

Universal Serial Bus (USB) is probably the most common way to connect a Pocket PC to a Mac. Most Pocket PCs today come with a cradle that has a USB cable attached to it or USB cable that plugs directly into the bottom of the Pocket PC.

A typical USB port from a "classic" iMac is shown here. Note the "trident" design on the top of the connector's plastic housing; it is this symbol that tells us we have a USB connector.



For best results with PocketMac Lite, we recommend plugging the USB cable directly into the Macintosh's USB ports. These ports can be found either on the back or side of the Mac, depending on the make and model.

Please note that neither the Mac nor the PocketMac Lite software will not recognize that a Pocket PC is connected unless it's actually turned on placed in the cradle or connected to the other end of the cable. Or, in other words, you can leave your Pocket PC's cradle or cable connected indefinitely; nothing will happen until the Pocket PC is turned on and connected to the other end of that cradle/cable.

Due to the nature of Pocket PCs, we *do not* recommend using a USB hub. You may find that you are unable to establish a connection if you use a hub.

## **3.2 TCP/IP Network connection**

PocketMac Lite is now much more integrated with the Pocket PC's ActiveSync. That means that there's less to learn and interact with on the Pocket PC when using PocketMac Lite.

Unlike previous versions of PocketMac Lite, where we had to manually enter the IP address of the Pocket PC into the PocketMac Lite software and then start something on the Pocket PC in order to connect the two, this version of PocketMac Lite is much simpler. In fact, we will not need to enter an IP address anywhere. Once installed on your Mac, PocketMac Lite is ready for a USB connection or a TCP/IP connection at any time. We do not have to tell PocketMac Lite to "switch" between the two.

Instead, we'll first connect via USB to allow PocketMac Lite to configure the Pocket PC's ActiveSync settings. We only have to do this once -- After that, the Pocket PC will have a standard ActiveSync partnership called "PocketMac".

So, if we now want to connect via TCP/IP, we'll just select the ActiveSync partnership on the Pocket PC and then connect to your Mac via ActiveSync. To do that, we'll start ActiveSync on the Pocket PC; choose "Tools", then "Options" from the menu at the bottom, as shown here. We'll then select the "PocketMac" partnership, and click the "ok" in the upper right-hand corner. To connect to PocketMac Lite, we'll simply click the "Sync" button on the main ActiveSync window -- That's all there is to it.

Please note, though, that the "Sync" button doesn't actually sync the device, but rather just establishes the connection between the Pocket PC and PocketMac Lite.

## **3.3 Bluetooth connection**

New to PocketMac Lite 3.0 is the ability to connect wirelessly via Bluetooth. Bluetooth is a short-range wireless specification for connecting computing devices and peripherals; one chief benefit of the technology is that it eliminates wires and cables that have traditionally connected computing devices.

To connect your Pocket PC to PocketMac Lite via Bluetooth, your Pocket PC device must have Bluetooth support built-in or provided by means of a Bluetooth peripheral device (usually a card). Additionally, your Macintosh must have Bluetooth hardware as well. A few of the newest Macintoshes have Bluetooth support built in, and support can be added to many others by means of a small USB adapter, manufactured by D-Link, Asante, AmbiCom, and others.

Once your Bluetooth hardware is installed on your Mac, Bluetooth support should be enabled<sup>1</sup>. You will now need to set up the Pocket PC device now so that it can find your Macintosh. Consult your Pocket PC/additional Bluetooth hardware device's documentation for more information on this topic. This setup process involves similar procedures on both devices in

---

<sup>1</sup> <http://docs.info.apple.com/article.html?artnum=25410>

which you instruct one device to find the other and establish a wireless connection with that other device.

The setup process is similar on the Pocket PC device, although it varies slightly with the version. On the latest Pocket PC devices with Bluetooth support built in, From the Today screen, tap "Start," and "Bluetooth Manager." The first screen that displays is My Shortcuts. Bluetooth Manager can also be accessed from the Today screen by tapping the "Bluetooth" icon, then "Bluetooth Manager." Please note, opening Bluetooth Manager automatically turns on Bluetooth on your Pocket PC device. If your Mac has Bluetooth support enabled, you should see it in the Bluetooth browser located in the Bluetooth Manager screen.

We'll next need to help the Pocket PC find and connect to your Mac. The steps to accomplish this are:

1. From the Today screen, tap "Start," and "Bluetooth Manager."
2. Tap the "New" menu, then "Connect!"
3. Double-tap "ActiveSync via Bluetooth"
4. Continue tapping "Next" until you get to a screen that says "Device: <No Device selected>".
5. Tap where it says "Tap here to choose a device". The Bluetooth Manager will attempt to find your Macintosh.
6. When the Bluetooth Manager has found your Macintosh, tap where it displays your Macintosh.
7. The Bluetooth Manager will then take you to a screen that says "Shortcut creation". Tap the finish button to connect.
8. When you are done, you will end up with a shortcut similar to the one shown here that you can use to connect on subsequent syncs.





Older Pocket PC devices with built-in Bluetooth support have a slightly different setup procedure<sup>2</sup>. Other Pocket PC devices that use additional hardware to support Bluetooth connectivity may have other procedures for setting up wireless connectivity; please refer to the manufacturer's instructions if you have one of these devices.

Once you have established a Bluetooth connection between your Macintosh and your Pocket PC, you need only instruct PocketMac Lite to use this connection for wireless synchronization. To do this, select "Connect via..." from the PocketMac Lite status menu at the top right of your Macintosh desktop, and check "Bluetooth." All future synchronizations will use the Bluetooth wireless connection until you change this setting.

## 4 Running PocketMac Lite 3.0

When a device is connected and recognized by the system, the main PocketMac Lite icon in the status bar will change from "off" when no Pocket PC is present and then to "on" when a Pocket PC is connected and/or synchronizing, as shown here:

<i>This image</i>	<i>indicates...</i>
	No Pocket PC connected
	Pocket PC connected & ready

Note: For users who are upgrading from Pro 2.0 and prefer that way of interacting with the Pocket PC, you can always display that window by choosing "Show PocketMac" from the PocketMac Lite icon in the menu bar.

## 5 Browsing/Copying files

Browsing and copying files to and from the Pocket PC is done via the Browse window. Additionally, PocketMac Lite 3.0 mounts Pocket PC & Pocket PC storage cards on the desktop, allowing you easy, direct access to your Pocket PC's files and folders. You need only double-click on these icons to browse your Pocket PC.

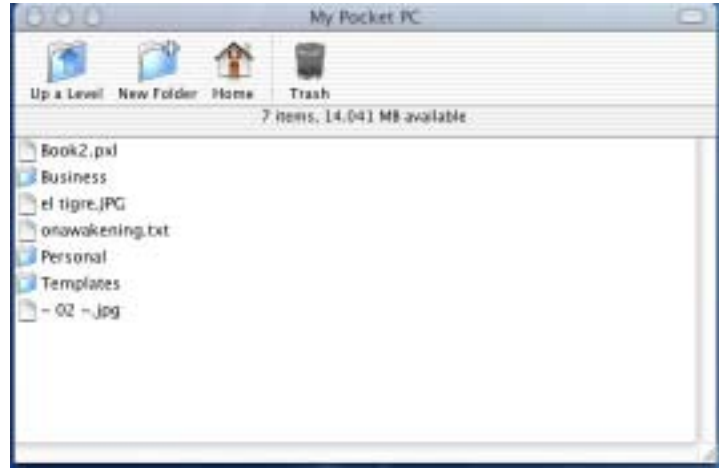
When the Browse window is displayed for the first time, it will automatically list the contents of your Pocket PC's "My Documents" folder.



<sup>2</sup> For an example of this (the 3900 series Compaq iPAQs), see [http://h20000.www2.hp.com/bizsupport/TechSupport/Document.jsp?objectID=PRI\\_400\\_0\\_33929864\\_3672052&locale=en\\_US](http://h20000.www2.hp.com/bizsupport/TechSupport/Document.jsp?objectID=PRI_400_0_33929864_3672052&locale=en_US).

Along the top of the Browse window, there is a toolbar with 4 items in it, as shown here.

1. "Up A Level" will display the contents of the Pocket PC "parent folder" of the one currently being displayed.
2. "New Folder" will prompt for a folder name, then create a new folder with that name.
3. "Home" will take us back to the Pocket PC's "My Documents" folder.
4. "Trash" will delete the currently selected file.



To copy a file to the Pocket PC, simply drag the file from the Mac (Finder) to the Browse window. Similarly, to copy a file from the Pocket PC to the Mac, simply click on the file you want to copy in the Browse window, and drag it to the Mac.

Alternatively, if you prefer, you can drag the file to any of the mounted images on your desktop.

## 6 Synchronizing

Here we'll review the different options, features, and so on of each of the different sync types and plug-ins. To synchronize your Mac and your Pocket PC, select the synch options you prefer from the PocketMac Lite status menu at the top right of your Macintosh desktop; this contains options for individual synchronizations by type and an "All" option that synchronizes all data according to the preferences selected in the PocketMac Lite Preferences screen.



Alternately, if you have selected "Show PocketMac Lite" from the PocketMac Lite status menu, you can click on the "Synchronize" icon in the PocketMac Lite window.

Please note that for best results with the Entourage Plug-ins, we recommend launching Entourage before synchronizing and ensuring that you are running the latest version of Entourage, which at the time of this writing is 10.1.4.<sup>3</sup>

<sup>3</sup> Entourage updates are available free of charge from <http://www.microsoft.com/mac>

## 6.1 All

Selecting the "All" option for synching simply performs all synch operations –Contacts, Calendar, Tasks– that PocketMac Lite can sync.

### 6.1.1 Address Book Plug-in

The Address Book plug-in will sync Pocket PC contacts with those stored in the OS X Address Book that comes standard with every OS X installation.

### 6.1.2 iCalCalendar plug-in

The iCalCalendar plug-in will synchronize Pocket PC calendar entries iCal; uncategorized appointments will appear in a calendar called "PocketMac".

### 6.1.3 iCal Tasks plug-in

The iCal Tasks plug-in will synchronize Pocket PC tasks with those stored in iCal.

## 6.2 On Connect

This menu item can be checked to cause PocketMac Lite to synchronize your data immediately when a Pocket PC is connected to the Mac.

# 7 Installing new Pocket PC software

PocketMac Lite 3.0 makes it even easier than ever to install new Pocket PC software.

## 7.1 Cab files explained

Almost all Windows CE/Pocket PC software is installed via what are called cabinet files, or "CABs" for short. CAB files are analogous to StuffIt archives or ZIP files, in that they are files, which in turn, contain other files.

The difference is that we'll never need to open CAB files directly. Instead, we can just use the PocketMac Lite status item's "Install new software..." menu and choose "CAB file". PocketMac Lite then does the work of installing the software for you.

The trick comes in identifying the right CAB files to use; usually, three CAB files are provided with a Pocket PC software purchase. However, it's usually very easy to determine which CAB file to use based on the name of the cab file, as shown here.

<i>If the CAB name contains...</i>	<i>then it is meant to be installed on...</i>
ARM or 2577	A Compaq iPAQ or any Pocket PC 2002/2003 units

<i>MIPS or 4000</i>	A Casio E-125/ EM-500 device
<i>SH3 or 10003</i>	An HP Jornada 54x device

Once you have the CAB file, though, it's a simple matter to copy it to the Pocket PC and simply launch it by tapping on the CAB file with your stylus.

## 7.2 Mac Installers/PocketMac Theme Installer

CAB files are useful, but the PocketMac community wanted something better.

PocketMac Lite 3.0 offers Pocket PC software developers the ability to create their own native Mac-based installers for the Pocket PC.<sup>11</sup> For more information, please visit our website at <http://www.PocketMac.net>.

## 8 iSync integration

PocketMac Lite 3.0 now offers integration with Apple's iSync product for the first time. This means that you can use all of the iSync settings to sync your Pocket PC. Specifically, you can configure iSync (and therefore, PocketMac Lite) to automatically synchronize every X minutes so that your iSync devices and your Pocket PC stay as up-to-date as possible.



## 9 Support & Troubleshooting

If you need support for PocketMac Lite, please contact us through one of the following means:

- Through our website at <http://www.PocketMac.net/support.htm>. This form will get you in touch with our engineers who will be happy to help solve whatever might be wrong. Our turnaround time for most support requests is 24-48 hours.
- Through our support documents located at <http://www.PocketMac.net>

<sup>11</sup> In fact, if they don't have a Mac yet, PocketMac.net offers the creation of Mac installers as a service.

Most support issues can be easily resolved with an email or two, but we're happy to help even on more complex issues.

## 10 Thank you

Once again, thank you for your purchase. We thank you for being a part of a community that believes in supporting innovative software solutions.

## 11 Appendix A: Firewalls

### Norton Personal Firewall

To configure Norton Personal Firewall (NPF) to interact nicely with PocketMac Lite, we have to allow access to certain specific "ports" used by the Pocket PC. Although we'll just list the ports here for reference, more detail is available online.<sup>2</sup>

To allow access to these ports from within NPF, open the settings window. Then, click the "new" button in the lower left hand corner. NPF will display a window (shown here) where you can define the parameters of a service. Any "Service Name" will do, though in this example, we'll use "Active Sync 1", and so on. We'll be creating four such services; for the "Service Port", we'll enter each of these values, one at a time:

- 990
- 999
- 5678
- 5679

For each service, then, click the "save" button to add it to the list. You will then have four possible access options for each of these new services we just created. Please note, ActiveSync will not work properly unless access is allowed to all four ports listed above.

We'll choose "Deny access only from addresses in list" for each of the "Active Sync" services, and leave the list empty. This is probably more secure and leaves us the option of always adding something later if we wanted to. (This is the way Norton has file sharing, etc. configured as well.) We're now done configuring Norton Personal Firewall so that it can play well with PocketMac Lite.<sup>3</sup>

---

<sup>2</sup> <http://support.microsoft.com/support/kb/articles/Q259/3/69.ASP>

<sup>3</sup> Thanks to David Dickey for the details.